



CORE

Safety ensured

WEATHERPROOF EQUIPMENTS



CORE Enclosures provide a versatile solutions for modern day industrial applications. They are rigid in construction, flexible offering complete safety in use. Safety and quality are trumps with CORE Enclosures.

*Available in IP-65 degree of protection and suitable for **Terminal Boxes, Push Button Station, Local Control Stations, Push Button Pendant, Street light Pole Boxes, Plug & Socket units, Electronic Equipment housing** and many other applications.*

*CORE offers an unbelievable choice of sizes and materials (**Sheet Steel, Cast Aluminium, Cast Iron and Glass Reinforced Polyester**) with the correct properties to suit every application.*

All enclosures are manufactured in the state of art manufacturing unit using latest technology resulting in high consistency and an aesthetically superior finish. The high grade powder coating (RAL7032 structure finish, RAL7001, or light grey shade 631) as standards for metallic boxes provides very uniform and durable surface finish that enhances corrosion resistance. Oil and Petrol resistant silicon cord is used on to covers, which ensures optimum ingress protection (IP) and long durability.



CAST ALUMINIUM ENCLOSURES

Features

- Lid & Base fastened by captive lid screws in stainless steel.
- Lid with silicon cord.
- Wall thickness adequate for cable gland fixing without check-nuts.
- Base with two earthing screws.
- Some enclosures provided with integrated canopy.
- Zinc passivated or powder coated sheet steel mounting plate available as accessory for maximum individual interior installations.
- Aesthetically designed.
- Wide Range.
- External Mounting arrangements.

Specifications

Material	: Cast Aluminium
Protection Class	: IP-65 (En60529)
Impact Resistance	: >7 Nm (En50014)
Painting	: Powder Coating
Colour	: Grey 631, RAL7001, RAL 7032

Special colours available on request.

Assembly

With Din Rail, Terminal Blocks and cable glands, as per customer requirement.

Services

Drilling, milling, etc., will be carried as per customer requirements.

Material Properties

1. Temperature Resistance :

Short Term (Hours) : -40 to + 120°C

Long Term (Months) : -30 to + 110°C

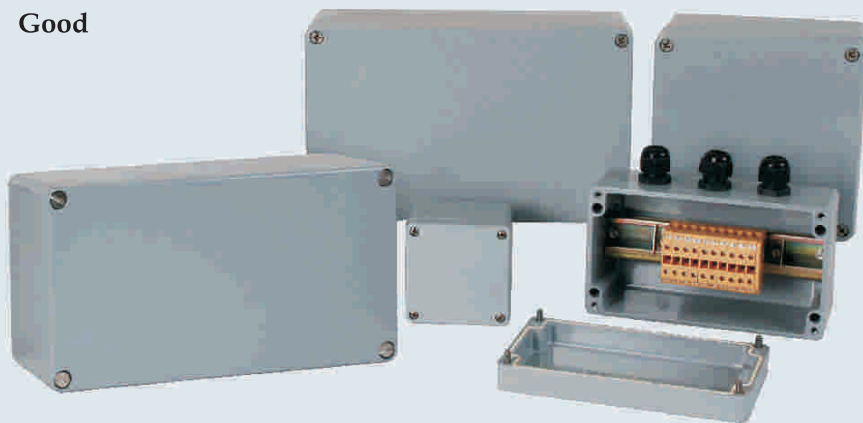
2. Chemical Resistance :

Alcohol, Petrol, Diesel, Mineral Oil,

Weak Alkaline Solutions & Acids : **Good**

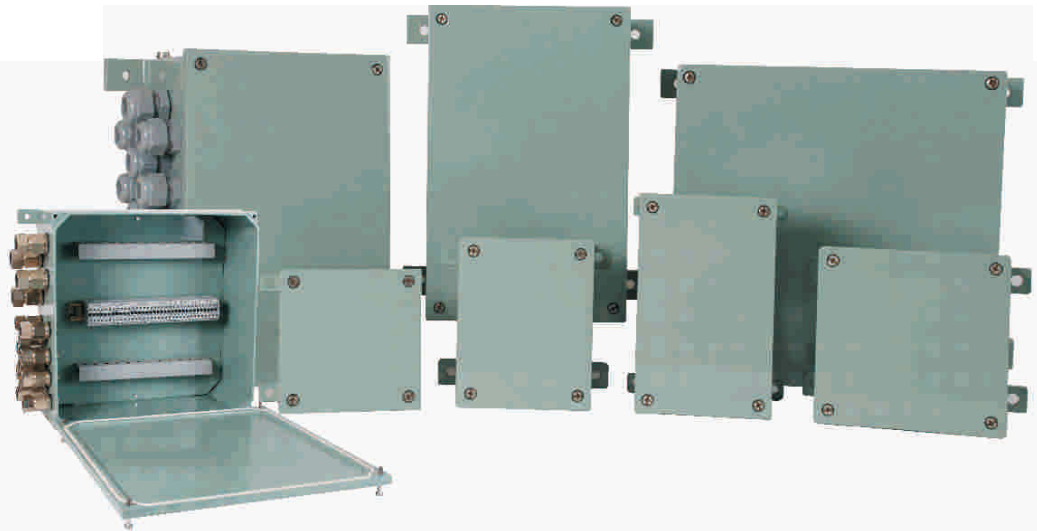
International Range Enclosures

Type	Size (WxLxH) mm
11-080805	80 x 80 x 50
11-101308	100 x 130 x 80
11-101808	100 x 175 x 80
11-122209	120 x 220 x 90
11-161609	160 x 160 x 90
11-162610	160 x 260 x 100





STANDARD RANGE ENCLOSURES



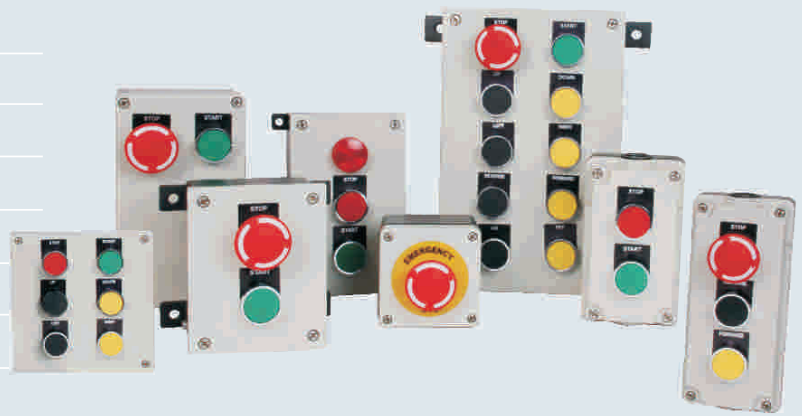
Type	Size (WxLxH)mm
10-101005	100 x 100 x 50
10-101008	100 x 100 x 80
10-101308	100 x 125 x 80
10-101608	100 x 160 x 80
10-101610	100 x 160 x 100
10-102008	100 x 200 x 80
10-131308	125 x 125 x 80
10-132008	125 x 200 x 80
10-132010	125 x 200 x 100
10-161608	160 x 160 x 80
10-161615	160 x 160 x 150
10-162508	160 x 250 x 80
10-162513	160 x 250 x 125
10-162518	160 x 250 x 180

Type	Size (WxLxH)mm
10-202010	200 x 200 x 100
10-203208	200 x 315 x 80
10-203213	200 x 315 x 125
10-252515	250 x 250 x 150
10-253013	250 x 300 x 125
10-254013	250 x 400 x 125
10-254015	250 x 400 x 150
10-255015	250 x 500 x 150
10-303313	300 x 325 x 125
10-353525	350 x 350 x 250
10-363615	360 x 360 x 150
10-404020	400 x 400 x 200
10-406015	400 x 600 x 150
10-406020	400 x 600 x 200

CAST ALUMINIUM PUSH BUTTON STATIONS

- Upto 10 ways
- Contact Blocks either base or cover mounted

Type	Size(WxLxH)mm	Ways
10-101005-01	100 x 100 x 50	1
10-101308-02	100 x 125 x 80	2
10-101608-03	100 x 160 x 80	3
10-102008-04	100 x 200 x 80	4
10-132008-05	125 x 200 x 80	5
10-161608-06	160 x 160 x 80	6
10-162508-08	160 x 250 x 80	8
10-203208-10	200 x 315 x 80	10



CAST ALUMINIUM LOCAL CONTROL STATIONS

- With integrated canopy
- Also available with complete wiring upto terminals

Type	Size (WxLxH)mm	Ways
15-101608-02	100 x 160 x 80	2
15-102008-04	100 x 200 x 80	4
15-153010-06	150 x 300 x 100	6
15-252510-08	250 x 250 x 100	8
15-203218-10	200 x 315 x 180	10

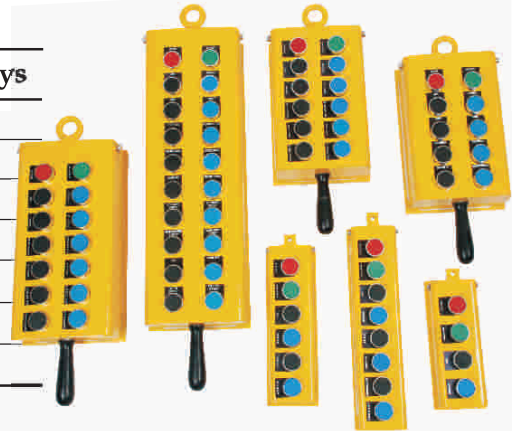




CAST ALUMINIUM PENDANT CONTROL STATIONS

- 2 way to 8 way in single row.
- 8 way to 20 way in double row.

Type	Size(WxLxH)mm	Ways
12-082005-04	80 x 200 x 50	4
12-082505-06	80 x 250 x 50	6
12-083205-08	80 x 315 x 50	8
12-162008-08	160 x 200 x 80	8
12-162508-12	160 x 250 x 80	12
12-163208-14	160 x 315 x 80	14
12-164908-20	160 x 485 x 80	20



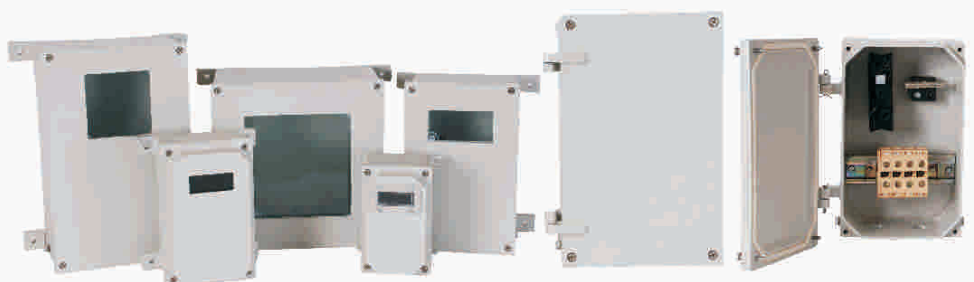
INSULATED PENDANT CONTROL STATIONS

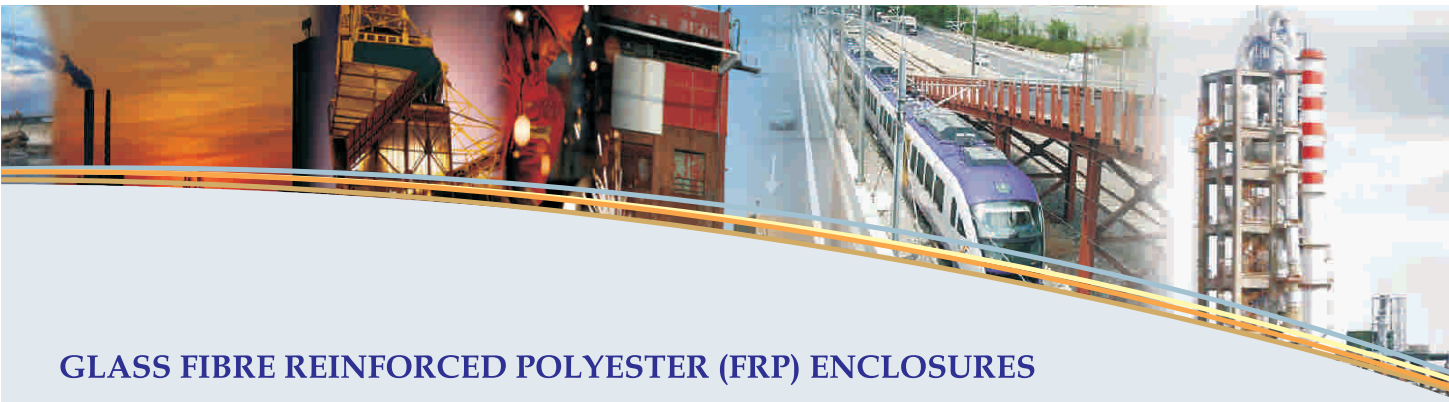
- Upto 8 way.
- IP 65 degree of protection.
- Cable entry with rubber sleeve stepped entry diameter for cable 7 Ø to 15 Ø.
- Enclosure in insulated material of yellow colour.



CAST ALUMINIUM POLE BOX & DISPLAY ENCLOSURES

- Street light pole box with neutral link, MCB & terminals.
- Display enclosures for housing electronic equipment with option of mounting plate and toughened glass.





GLASS FIBRE REINFORCED POLYESTER (FRP) ENCLOSURES

CORE also manufactures enclosures made from Flame retardant fibre glass reinforced polyester.

This enclosures which are capable of withstanding extremely high loads are ideal for use in situations where dust - proof, water - proof, fully insulated corrosion free encapsulations of electrical & electronic components are required. These electrical enclosures also find application in marine & offshore field.

Features

- IP-65 degree of protection.
- Lid & enclosures are fastened by captive lid screws in stainless steel.
- Tongue & groove system with silicon cord.
- Zinc passivated sheet mounting plate available as accessory.
- Protected against electrical shock.

Specifications

Material	: Glass Fibre reinforced polyester.
Protection Class	: IP-65 (En60529)
Toxicity	: Halogen - free
Colour	: Grey (RAL7001)
Dielectric Strength	: >10kv/mm
Water absorption	: Max 0.7% (ASTMD570)
Surface resistance	: >10 ¹² ohms. (DIN 53482)
Flammability	: Self extinguishing (UL, A4-V0)
Insulation	: Fully Insulated
Impact resistance	: >7Nm. (En 50014)
Seal	: -60 to 130°C, Silicon Cord.

International Range Enclosures

Type	Size (WxLxH)mm
21-101005	100 x 100 x 50
21-131310	125 x 125 x 100
21-162210	160 x 220 x 100
21-162610	160 x 260 x 100
21-252512	250 x 250 x 120

