

# ROYAL RAYS®

Cable Glands and Terminals



**2026**  
PRICE LIST



ISO 9001:2015  
Certificate Number: 305022041305Q

01

RING TERMINAL ENDS

02

RING TERMINAL ENDS INSULATED  
RING TERMINAL ENDS METAL REINFORCEMENT  
COPPER ENDS SEALING FERRULS (E.H)

03

PIN TERMINAL ENDS  
PIN TERMINAL ENDS INSULATED  
PIN TERMINAL ENDS METAL REINFORCEMENT  
SNAP ON TERMINAL ENDS  
FORK TERMINAL ENDS  
FORK TERMINAL ENDS INSULATED  
FORK TERMINAL ENDS METAL REINFORCEMENT  
RELAY FORK TERMINAL ENDS  
HARNESS FORK TERMINAL ENDS  
RELAY/HARNESS FORK TERMINAL INSULATED

04

COPPER TUBLAR TERMINAL ENDS LIGHT DUTY  
COPPER TUBLAR TERMINAL ENDS LIGHT DUTY LONG BARREL  
COPPER IN-CONNECTOR FERRULE LIGHT DUTY  
COPPER WIRE PIN REDUCER

05

COPPER TUBULAR TERMINAL ENDS HEAVY DUTY  
WITH INSPECTION SLOT (EXPORT SERIES)  
COPPER TUBULAR TERMINAL ENDS HEAVY DUTY LONG BARREL  
COPPER IN-LINE CONNECTOR HEAVY DUTY

06

ALUMINIUM TUBLAR TERMINAL ENDS  
ALUMINIUM TUBULAR TERMINAL ENDS LONG BARREL

07

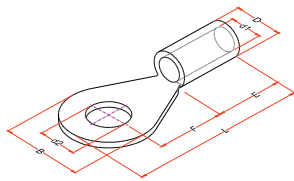
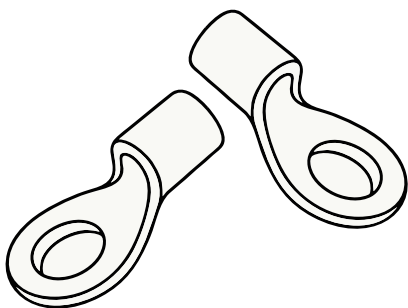
ALUMINIUM IN-LINE CONNECTOR  
ALUMINIUM WIRE PIN REDUCER  
ALUMINIUM TUBLAR TERMINAL ENDS XLPE  
ALUMINIUM TUBULAR TERMINAL ENDS DOUBLE HOLE  
ALUMINIUM IN-LINE CONNECTOR XLPE

08

COPPER END SEALING FERRULS INSULATED  
COPPER END SEALING FERRULS TWIN INSULATED

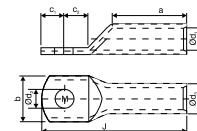
09

SINGLE COMPRESSION COMMERCIAL BRASS CABLE GLANDS  
DOUBLE COMPRESSION COMMERCIAL BRASS CABLE GLANDS



Cable Glands and Terminals

RING TERMINAL ENDS			RING TERMINAL ENDS			RING TERMINAL ENDS		
Size	Cat. No.	Rate	Size	Cat. No.	Rate	Size	Cat. No.	Rate
1.5-3.2	RR-7001	2.10	4.6-8.2	RR-7020	6.65	25-10.2	RR-7132	33.40
1.5-4.5	RR-7003	2.10	4.6-10.2	RR-7023	10.00	25-10.2	RR-7131	27.20
1.5-4.2	RR-7004	2.30	4.6-12.7	RR-7024	10.00	25-12.7	RR-7037	34.10
1.5-5.2	RR-7005	2.25	4.6-5.2	RR-7016	5.20	35-6.4	RR-7133	29.25
1.5-6.4	RR-7007	2.60	4.6-6.4	RR-7019	6.95	35-8.2	RR-7038	28.20
1.5-3.7	RR-7002	2.15	4.6-10.2	RR-7022	9.50	35-8.2	RR-7134	32.40
1.5-3.2	RR-7153	2.15	10-4.2	RR-7119	6.50	35-10.2	RR-7135	38.50
1.5-3.7	RR-7048	2.15	10-5.2	RR-7026	6.65	35-10.2	RR-7039	32.50
1.5-4.2	RR-7049	2.15	10-6.4	RR-7120	7.35	35-12.7	RR-7040	39.20
1.5-5.2	RR-7006	2.30	10-8.2	RR-7122	12.10	50-8.2	RR-7136	46.25
2.5-3.2	RR-7107	2.28	10-8.2	RR-7121	8.80	50-10.2	RR-7137	47.80
2.5-4.2	RR-7009	2.70	10-10.2	RR-7123	13.26	50-16.2	RR-7139	59.60
2.5-4.2	RR-7008	2.20	10-10.2	RR-7027	10.80	50-10.2	RR-7041	43.75
2.5-5.2	RR-7010	2.50	10-12.2	RR-7028	11.95	50-10.2	RR-7138	53.40
2.5-5.2	RR-7109	3.09	10-5.2	RR-7025	8.60	50-12.7	RR-7042	52.10
2.5-5.2	RR-7108	2.48	16-6.4	RR-7029	11.80	70-8.2	RR-7140E8	68.90
2.5-6.4	RR-7011	2.98	16-8.2	RR-7127	15.60	70-10.2	RR-7140	64.10
2.5-8.2	RR-7014	5.85	16-8.2	RR-7030	13.30	70-12.7	RR-7141	67.90
2.5-8.2	RR-7015	4.96	16-10.2	RR-7032	15.30	70-12.7	RR-7043	64.00
2.5-10.2	RR-7111	6.00	16-10.2	RR-7128	17.90	70-16.2	RR-7142	73.50
2.5-10.2	RR-7151	6.10	16-12.7	RR-7033	17.30	95-8.2	RR-7144E8	96.00
2.5-5.2	RR-7110	5.10	16-5.2	RR-7124	13.50	95-10.2	RR-7144	92.10
2.5-6.4	RR-7012	4.50	16-5.2	RR-7125	15.10	95-10.2	RR-7143	84.80
2.5-8.2	RR-7013	3.82	16-6.4	RR-7126	17.90	95-12.7	RR-7044	90.50
2.5-12.7	RR-7047	5.95	25-6.4	RR-7156	24.50	95-16.2	RR-7145	100.80
4.6-4.2	RR-7155	4.95	25-6.4	RR-7130	30.80	120-12.7	RR-7146	130.00
4.6-5.2	RR-7050	4.20	25-8.2	RR-7034	23.80	120-16.2	RR-7147	149.80
4.6-6.2	RR-7115	7.78	25-8.2	RR-7129	28.00	120-20.3	RR-7148	176.80
4.6-6.2	RR-7113	6.30	25-8.2	RR-7051	30.30	150-16.2	RR-7150	211.50
4.6-6.4	RR-7017	5.40	25-8.2	RR-7036	32.50	150-16.2	RR-7045	190.00
4.6-8.2	RR-7018	5.30	25-10.2	RR-7035	23.00	150-20.3	RR-7046	208.00





**Finish**  
• Electro Tin Plated



Cable Glands and Terminals

**Characteristics**

- Maximum Electrical rating : 600 Volt
- Maximum Temperature : 105 °C)

**Material**

- High Conductivity Copper

RING TERMINAL ENDS INSULATED			REFERENCE	RING TERMINAL ENDS METAL REINFORCEMENT		
Size	Cat. No.	Rate	Cat. No.	Size	Cat. No.	Rate
1.5-4.2	RR7061	3.20	RR 7004	1.5-4.2	RRMR-7444	4.00
1.5-5.2	RR7062	3.10	RR 7005	1.5-5.2	RRMR-7445	4.10
1.5-6.4	RR7066	3.70	RR 7007	1.5-6.4	RRMR-7449	4.39
2.5-3.2	RR7068	3.35	RR 7107	2.5-3.2	RRMR-7451	4.50
2.5-4.2	RR7071	3.38	RR 7009	2.5-4.2	RRMR-7454	4.40
2.5-5.2	RR7072	3.36	RR 7010	2.5-5.2	RRMR-7455	4.40
2.5-5.2	RR7073	4.08	RR 7109	2.5-5.2	RRMR-7456	5.06
2.5-6.4	RR7074	3.80	RR 7011	2.5-6.4	RRMR-7457	5.06
2.5-8.2	RR7079	6.58	RR 7014	2.5-8.2	RRMR-7462	7.40
2.5-10	RR7080	6.30	RR 7015	2.5-10	RRMR-7463	7.00
2.5-10.4	RR7081	6.65	RR 7151	2.5-10.4	RRMR-7464	8.20
4.6-5.2	RR7084	5.25	RR 7050	4.6-5.2	RRMR7467	8.00
4.5-5.2	RR7086	6.50	RR 7016	4.5-5.2	RRMR7469	8.52
4.6-6.4	RR7089	6.55	RR 7017	4.6-6.4	RRMR7472	8.60
4.6-8.2	RR7090	6.40	RR 7018	4.6-8.2	RRMR7473	8.50
4.6-8.2	RR7094	8.40	RR 7020	4.6-8.2	RRMR-7477	10.60
4.6-10.2	RR7099	10.75	RR 7023	4.6-10.2	RRMR-7482	11.95
4.6-12.7	RR7100	10.25	RR 7024	4.6-12.7	RRMR-7483	12.50
10.0-6	RR7393	10.00	RR 7120	10.0-6	RRMR-7488	16.00
10.0 -8	RR7394	11.95	RR 7121	10.0 -8	RRMR-7489	17.50
10.0 -10	RR7396	13.45	RR 7027	10.0 -10	RRMR-7491	22.95
16.0 -6	RR7401	15.86	RR 7029	16.0 -6	RRMR-7496	26.20
16.0 -8	RR7403	17.85	RR 7030	16.0 -8	RRMR-7498	28.10

COPPER ENDS SEALING FERRULS (E.H)			COPPER ENDS SEALING FERRULS (E.H)		
Size	Cat. No.	Rate	Size	Cat. No.	Rate
0.50	RR508	0.60	2.5	RR515	1.14
0.75	RR509	0.72	4	RR516	1.10
1.00	RR510	0.84	4	RR517	1.18
1.00	RR511	0.94	6	RR518	1.40
1.5	RR512	0.96	6	RR519	1.60
1.5	RR513	1.04	6	RR520	1.80
2.5	RR514	1.08			



**COPPER BRAID**



# ROYAL RAYS®

Cable Glands and Terminals

PIN TERMINAL ENDS			PIN TERMINAL ENDS INSULATED			PIN TERMINAL ENDS METAL REINFORCEMENT		
Size	Cat. No.	Rate	Size	Cat. No.	Rate	Size	Cat. No.	Rate
1.5	RR-9	2.25	1.5	RR-17	3.20	1.5	RRMR-26	4.00
1.5	RR-35	2.20	1.5	RR-40	3.00	2.5	RRMR-27	4.15
2.5	RR-1	2.25	2.5	RR-18	3.40	2.5	RRMR-28	4.20
2.5	RR-2	2.42	2.5	RR-19	3.24	4	RRMR-29	7.65
4	RR-3	4.60	4	RR-20	6.30	4	RRMR-30	7.80
4	RR-4	4.80	4	RR-21	5.90	6	RRMR-31	11.50
6	RR-5	5.00	6	RR-22	6.80	6	RRMR-32	25.94
10	RR-7	7.30	10	RR-24	9.90	<b>SNAP ON TERMINAL ENDS</b>		
16	RR-8	13.65	16	RR-25	16.80			
25	RR-86	27.35				Size	Cat. No.	Rate
35	RR-87	30.10				1.5 MM	RR 8351	2.60
50	RR-88	45.40				1.5 MM	RR 3001	2.80
70	RR-94	67.20				2.5 MM	RR 8347	2.85
95	RR-95	94.50				2.5 MM	RR 3002	2.95

FORK TERMINAL ENDS			FORK TERMINAL ENDS INSULATED			FORK TERMINAL ENDS METAL REINFORCEMENT		
Size	Cat. No.	Rate	Size	Cat. No.	Rate	Size	Cat. No.	Rate
1.5-3.5	RR-7249	2.10	1.5-3.5	RR-7926	2.85	1.5-3.5	RRMR-7935	3.95
2.5-3.5	RR-7251	2.20	2.5-3.5	RR-7928	2.95	2.5-3.5	RRMR-7937	4.20
4.6-3.5	RR-7253	3.74	4-6-3.5	RR-7931	5.10	4.6-3.5	RRMR-7940	6.75
10-6.5	RR-7254	7.50	10-6.5	RR-7932	5.20	10-3.5	RRMR-7941	14.10
16	RR-7255	10.80	16	RR-7934	14.20	16	RRMR-7943	21.10

RELAY FORK TERMINAL ENDS			HARNESS FORK TERMINAL ENDS			RELAY/HARNESS FORK TERMINAL INSULATED		
Size	Cat. No.	Rate	Size	Cat. No.	Rate	Size	Cat. No.	Rate
1.5 - 3.2	RR7249 RELAY	2.00	1.5 - 4.2	RR7249 HR	2.00	1.5 - 3.2	RR7249RL(I)	3.18
2.5 - 3.6	RR7251 RELAY	2.10	2.5 - 4.2	RR7251 HR	2.10	2.5 - 3.6	RR7251RL(I)	3.48
						1.5 - 4.2	RR7249 HR(I)	3.18
						2.5 - 4.2	RR7251 HR(I)	3.48

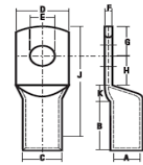




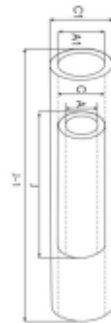
COPPER TUBLAR TERMINAL ENDS LIGHT DUTY			COPPER TUBLAR TERMINAL ENDS LIGHT DUTY LONG BARREL			COPPER IN-CONNECTOR FERRULE LIGHT DUTY			
Size	Cat. No.	Rate	Size	Cat. No.	Rate	Size	Cat. No.	Length	Rate
2.5-5.2	RRCUS-05	4.60	2.5-5.2	RRCUSLB-05	6.80	1.5	RRCC-453	15 MM	3.20
4.6-6.2	RRCUS-06	7.95	4.6-6.2	RRCUSLB-06	8.20	2.5	RRCC-454	15 MM	4.00
6.0-6.2	RRCUS-07	9.90	6.0-6.2	RRCUSLB-07	10.90	4	RRCC-455	15 MM	5.40
10-6.2	RRCUS-08	11.20	10-6.2	RRCUSLB-08	13.00	6	RRCC-4	15 MM	6.20
16-6.2	RRCUS-09	14.60	16-6.2	RRCUSLB-09	18.50	10	RRCC-460	20 MM	9.34
25-6.2	RRCUS-10	30.40	25-6.2	RRCUSLB-10	34.10	16	RRCC-6	20 MM	10.40
35-6.2	RRCUS-11	34.10	35-6.2	RRCUSLB-11	38.90	25	RRCC-24	32 MM	22.10
35-8.2	RRCUS-12	34.10	35-8.2	RRCUSLB-12	38.90	35	RRCC-25	36 MM	34.20
50-6.2	RRCUS-13	43.00	50-6.2	RRCUSLB-13	51.40	50	RRCC-26	40 MM	55.80
50-8.2	RRCUS-14	45.20	50-8.2	RRCUSLB-14	51.40	70	RRCC-51	40 MM	78.00
50-10.2	RRCUS-15	45.20	50-10.2	RRCUSLB-15	51.40	95	RRCC-52	45 MM	123.50
70-8.2	RRCUS-16	71.60	70-8.2	RRCUSLB-16	90.50	120	RRCC-53	45 MM	146.00
70-10.2	RRCUS-17	71.60	70-10.2	RRCUSLB-17	90.50	150	RRCC-54	55 MM	216.00
70-12.7	RRCUS-18	71.60	70-12.7	RRCUSLB-18	90.50	185	RRCC-55	65 MM	326.00
95-10.2	RRCUS-19	108.00	95-10.2	RRCUSLB-19	124.50	240	RRCC-56	80 MM	442.00
95-12.7	RRCUS-20	108.00	95-12.7	RRCUSLB-20	124.50	300	RRCC-57	85 MM	622.00
120-10.2	RRCUS-21	131.00	120-10.2	RRCUSLB-21	163.80	400	RRCC-58	90 MM	956.00
120-12.7	RRCUS-22	131.00	120-12.7	RRCUSLB-22	163.80	500	RRCC-59	100 MM	1310.00
120-16.2	RRCUS-23	131.00	120-16.2	RRCUSLB-23	163.80	630	RRCC-61	110 MM	1850.00
150-10.2	RRCUS-24	176.00	150-10.2	RRCUSLB-24	242.00	<b>COPPER WIRE PIN REDUCER</b>			
150-12.7	RRCUS-25	176.00	150-12.7	RRCUSLB-25	242.00	<b>Size</b>	<b>Cat. No.</b>	<b>Rate</b>	
150-16.2	RRCUS-26	176.00	150-16.2	RRCUSLB-26	242.00	2.5	RRCR-07	17.21	
185-12.7	RRCUS-27	295.50	185-12.7	RRCUSLB-27	356.50	4	RRCR-16	18.00	
185-16.2	RRCUS-28	295.50	185-16.2	RRCUSLB-28	356.50	6	RRCR-18	18.50	
240-16.2	RRCUS-29	418.00	240-16.2	RRCUSLB-29	530.00	10	RRCR-20	20.00	
240-20.3	RRCUS-30	418.00	240-20.3	RRCUSLB-30	530.50	16	RRCR-02	31.60	
300-16.2	RRCUS-31	566.00	300-16.2	RRCUSLB-31	750.00	25	RRCR-25	46.69	
300-20.3	RRCUS-32	566.00	300-20.3	RRCUSLB-32	750.00	25	RRCR-03	62.00	
400-20	RRCUS-33	785.00	400-20	RRCUSLB-33	998.80	35	RRCR-04	66.10	
500-20	RRCUS-34	1022.00	500-20	RRCUSLB-34	1350.00	50	RRCR-26	83.70	
630-20	RRCUS-35	1520.00	630-20	RRCUSLB-35	1950.00	70	RRCR-27	118.00	
800-	RRCUS-62	2500.00	800-	RRCUSLB-62	2300.00	95	RRCR-31	158.00	
1000-	RRCUS-76	5595.00	1000-	RRCUSLB-76	4400.00	120	RRCR-34	196.00	



COPPER TUBULAR TERMINAL ENDS HEAVY DUTY (EXPORT SERIES) WITH INSPECTION SLOT			COPPER TUBULAR TERMINAL ENDS HEAVY DUTY (EXPORT SERIES) WITH INSPECTION SLOT			COPPER TUBULAR TERMINAL ENDS HEAVY DUTY LONG BARREL		
Size	Cat. No.	Rate	Size	Cat. No.	Rate	Size	Cat. No.	Rate
6-6	RR-544	8.50	95-12	RR-560	151.00	25-8.2	RR-282	34.00
6-8	RR-545	8.50	120-12	RR-241	202.00	35-8.2	RR-283	63.00
10-6	RR-353	9.53	120-16	RR-546	202.00	50-8.2	RR-284	93.00
10-8	RR-547	9.58	150-13	RR-242	298.00	70-10.2	RR-285	142.00
16-6	RR-354	14.50	150-16	RR-564	298.00	95-12.7	RR-286	216.00
16-8	RR-549	14.50	185-12	RR-639	375.00	120-12.7	RR-287	314.00
25-6	RR-355	23.40	185-16	RR-243	375.00	150-12.7	RR-288	379.00
25-8	RR-551	23.40	240-16	RR-244	525.00	185-12.7	RR-289	562.00
25-10	RR-552	24.60	240-20	RR-567	515.00	240-16.2	RR-290	792.00
35-8	RR-356	36.00	300-16	RR-245	769.00	300-16.2	RR-291	1010.00
35-10	RR-554	36.00	300-20	RR-569	760.00	400-20.3	RR-292	1610.00
50-8	RR-357	62.00	400-16	RR-246	1298.00	500-21	RR-293	2560.00
50-10	RR-556	62.00	400-20	RR-571	1250.00	630-21	RR-294	3560.00
70-8	RR-557	105.00	500-16	RR-596	1740.00			
70-10	RR-358	105.00	500-20	RR-247	1710.00			
70-12	RR-559	105.00	630-20	RR-248	2290.00			
95-10	RR-359	151.00	1000-	RR-590	5000.00			



COPPER IN-LINE CONNECTOR HEAVY DUTY				COPPER IN-LINE CONNECTOR HEAVY DUTY			
Size	Cat. No.	Length	Rate	Size	Cat. No.	Length	Rate
1.5 MM	RRCC-453	15 MM	3.20	50 MM	RRCC-9	35 MM	37.00
2.5 MM	RRCC-454	15 MM	4.00	70 MM	RRCC-10	40 MM	57.50
4 MM	RRCC-43	22 MM	7.40	95 MM	RRCC-11	45 MM	94.00
4 MM	RRCC-3	15 MM	5.40	120 MM	RRCC-12	50 MM	122.00
6 MM	RRCC-44	22 MM	9.00	150 MM	RRCC-13	55 MM	173.50
10 MM	RRCC-45	22 MM	9.80	185 MM	RRCC-14	60 MM	230.00
16 MM	RRCC-46	35 MM	17.80	240 MM	RRCC-15	65 MM	321.00
25 MM	RRCC-47	47 MM	31.50	300 MM	RRCC-16	75 MM	468.00
25 MM	RRCC-7	25 MM	23.00	400 MM	RRCC-17	90 MM	1310.00
35 MM	RRCC-485	12 MM	19.20				
35 MM	RRCC-487	27 MM	40.30				
35 MM	RRCC-8	30 MM	33.20				



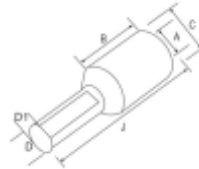
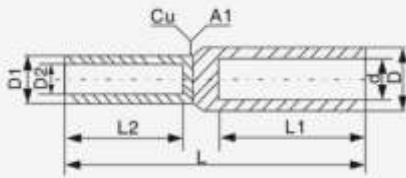


ALUMINIUM TUBLAR TERMINAL ENDS			ALUMINIUM TUBLAR TERMINAL ENDS			ALUMINIUM TUBLAR TERMINAL ENDS		
Size	Cat. No.	Rate	Size	Cat. No.	Rate	Size	Cat. No.	Rate
2.5-3.2	RR-151	2.76	35-6.4	RR-254	7.45	150-12.7	RR-232	41.80
2.5-3.7	RR-309	2.76	35-8.2	RR-221	7.45	150-16.2	RR-233	41.80
4-4.2	RR-155	3.40	35-10.2	RR-222	7.45	185-10.2	RR-311	56.45
4-5.2	RR-317	3.40	50-8.2	RR-255	12.90	185-12.7	RR-234	56.45
6-5.2	RR-158	3.60	50-10.2	RR-312	12.90	185-16.2	RR-235	56.45
6-6.5	RR-313	3.60	50-12.7	RR-224	12.90	240-12.7	RR-236	82.10
10-4.2	RR-159	3.80	70-8.2	RR-256	20.16	240-16.2	RR-237	82.10
10-6.4	RR-214	3.80	70-10.2	RR-225	20.16	300-16.2	RR-300	110.20
10-8.2	RR-215	3.80	70-12.7	RR-226	20.16	300-20.3	RR-259	110.20
16-6.4	RR-252	4.80	95-10.2	RR-227	21.95	400-20.3	RR-260	171.00
16-8.2	RR-216	4.80	95-12.7	RR-228	21.95	500-20.3	RR-296	282.00
16-10.2	RR-217	4.80	95-16.2	RR-229	21.95	630-20.3	RR-261	338.00
25-6.4	RR-253	6.95	120-10.2	RR-257	31.20	800-	RR-318	491.00
25-8.2	RR-218	6.95	120-12.7	RR-230	31.20	1000-	RR-319	778.00
25-10.2	RR-219	6.95	120-16.2	RR-231	31.20			
25-12.7	RR-220	6.95	150-10.2	RR-258	41.80			

ALUMINIUM TUBULAR TERMINAL ENDS LONG BARREL			ALUMINIUM TUBULAR TERMINAL ENDS LONG BARREL			ALUMINIUM TUBULAR TERMINAL ENDS LONG BARREL		
Size	Cat. No.	Rate	Size	Cat. No.	Rate	Size	Cat. No.	Rate
2.5-3	RRLB-551	3.56	35-10	RRLB-522	8.80	150-16	RRLB-533	60.60
2.5-3.5	RRLB-509	3.56	50-8	RRLB-655	16.50	185-10	RRLB-511	72.10
4 -4.0	RRLB-555	3.80	50-10	RRLB-512	16.50	185-12	RRLB-534	72.10
4 -5.0	RRLB-517	3.80	50-12	RRLB-524	16.50	185-16	RRLB-535	72.10
6 -5	RRLB-558	3.80	70-8	RRLB-556	27.80	240-12	RRLB-536	110.50
6 -6	RRLB-513	3.80	70-10	RRLB-525	27.80	240-16	RRLB-537	110.50
10.0-6	RRLB-514	4.40	70-12	RRLB-526	27.80	240-20	RRLB-538	110.50
10.0-8	RRLB-515	4.40	95-10	RRLB-527	31.90	300-16	RRLB-500	146.00
16-6	RRLB-552	6.60	95-12	RRLB-528	31.90	300-20	RRLB-559	142.00
16-8	RRLB-516	6.60	95-16	RRLB-529	31.90	400-20	RRLB-560	209.00
16-10	RRLB-617	6.60	120-10	RRLB-557	42.60	500-20	RRLB-596	370.00
25-8	RRLB-518	8.20	120-12	RRLB-530	42.60	630-20	RRLB-561	448.00
25-10	RRLB-519	8.20	120-16	RRLB-531	42.60	800-	RRLB-618	650.00
25-12	RRLB-520	8.20	150-10	RRLB-658	60.60	1000-	RRLB-619	992.00
35-8	RRLB-521	8.80	150-12	RRLB-532	60.60			



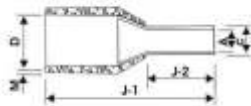
ALUMINIUM IN-LINE CONNECTOR			ALUMINIUM IN-LINE CONNECTOR			ALUMINIUM WIRE PIN REDUCER		
Size	Cat. No.	Rate	Size	Cat. No.	Rate	Size	Cat. No.	Rate
2.5	RRAC-145	2.32	120	RRAC-09	27.80	2.5	RRAR-07	5.55
2.5	RRAC-06	2.32	150	RRAC-10	36.80	4.0	RRAR-16	5.75
4	RRAC-05	2.32	185	RRAC-11	47.52	6.0	RRAR-17	5.95
6	RRAC-13	2.40	240	RRAC-16	71.50	10	RRAR-20	7.60
10	RRAC-14	3.10	300	RRAC-17	98.00	16	RRAR-02	9.10
16	RRAC-4	3.50	400	RRAC-18	156.00	25	RRAR-25	14.25
25	RRAC-3	5.45	500	RRAC-19	239.00	35	RRAR-04	18.00
35	RRAC-02	6.77	630	RRAC-20	312.00	50	RRAR-26	34.00
50	RRAC-12	10.76	800	RRAC-148	380.00	70	RRAR-27	39.00
70	RRAC-01	18.10	1000	RRAC-149	690.00	95	RRAR-31	60.00
95	RRAC-15	21.00				120	RRAR-34	75.00



ALUMINIUM TUBULAR TERMINAL ENDS XLPE			ALUMINIUM TUBULAR TERMINAL ENDS XLPE			ALUMINIUM TUBULAR TERMINAL ENDS DOUBLE HOLE		
Size	Cat. No.	Rate	Size	Cat. No.	Rate	Size	Cat. No.	Rate
25-8	RRXL17	9.50	150-12	RRXL23	81.00	50 SQMM	RRDH312	18.90
35-8	RRXL18	13.50	185-12	RRXL24	109.00	70 SQMM	RRDH226	31.00
50-10	RRXL19	18.85	225-12	RRXL25	110.00	95 SQMM	RRDH228	40.60
70-10	RRXL20	30.10	240-12	RRXL26	153.00	120 SQMM	RRDH230	45.00
95-12	RRXL21	42.00	300-20	RRXL27	194.00	150 SQMM	RRDH232	78.00
120-12	RRXL22	59.10	400-20	RRXL28	352.00	185 SQMM	RRDH234	84.00
						240 SQMM	RRDH237	112.00
						300 SQMM	RRDH300	142.00
						400 SQMM	RRDH260	165.00

ALUMINIUM IN-LINE CONNECTOR XLPE			ALUMINIUM IN-LINE CONNECTOR XLPE			ALUMINIUM IN-LINE CONNECTOR XLPE		
Size	Cat. No.	Rate	Size	Cat. No.	Rate	Size	Cat. No.	Rate
25	RRACXL01	10.00	150	RRACXL07	71.50	500	RRACXL13	383.00
35	RRACXL02	14.20	185	RRACXL08	105.30	630	RRACXL14	540.00
50	RRACXL03	22.80	225	RRACXL09	127.00	800	RRACXL15	728.00
70	RRACXL04	31.10	240	RRACXL10	151.00	1000	RRACXL16	1000.00
95	RRACXL05	43.00	300	RRACXL11	194.00			
120	RRACXL06	54.40	400	RRACXL12	295.00			





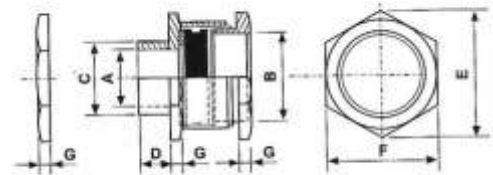
\* COPPER BS - 1977  
\* ELECTRO-TINNED FINISH

COPPER END SEALING FERRULS INSULATED				COPPER END SEALING FERRULS TWIN INSULATED			
Size	Cat. No.	Colour	Rate	Size	Cat. No.	Colour	Rate
0.5 MM L8	RR508L8	WHITE	0.74	0.5 MM L8	RRTW508L8	WHITE	1.50
0.5 MM L10	RR508L10	WHITE	0.80	0.5 MM L10	RRTW508L10	WHITE	1.80
0.5 MM L12	RR508L12	WHITE	1.04	0.5 MM L12	RRTW508L12	WHITE	2.15
0.75 MM L8	RR509 L8	GREY	0.78	0.75 MM L8	RRTW509 L8	GREY	1.65
0.75 MM L10	RR509 L10	GREY	0.92	0.75 MM L10	RRTW509 L10	GREY	2.20
0.75 MM L12	RR509 L12	GREY	1.10	0.75 MM L12	RRTW509 L12	GREY	2.60
1.0 MM L8	RR510 L8	RED	0.90	1.0 MM L8	RRTW510 L8	RED	2.00
1.0 MM L10	RR511 L10	RED	1.50	1.0 MM L10	RRTW511 L10	RED	2.60
1.0 MM L12	RR511 L12	RED	1.10	1.0 MM L12	RRTW511 L12	RED	3.10
1.5 MM L8	RR513L8	BLACK	1.10	1.5 MM L8	RRTW513L8	BLACK	2.24
1.5 MM L10	RR513L10	BLACK	1.25	1.5 MM L10	RRTW513L10	BLACK	3.02
1.5 MM L12	RR513L12	BLACK	1.42	1.5 MM L12	RRTW513L12	BLACK	3.45
2.5 MM L8	RR514L8	BLUE	1.30	2.5 MM L8	RRTW514L8	BLUE	2.50
2.5 MM L10	RR515L10	BLUE	1.60	2.5 MM L10	RRTW515L10	BLUE	3.34
2.5 MM L12	RR515L12	BLUE	1.72	2.5 MM L12	RRTW515L12	BLUE	3.82
4 MM L10	RR517L10	GREY	2.00	4 MM L10	RRTW517L10	GREY	3.82
4 MM L12	RR517L12	GREY	2.36	4 MM L12	RRTW517L12	GREY	4.44
4 MM L15	RR517L15	GREY	2.84	4 MM L15	RRTW517L15	GREY	5.10
6 MM L10	RR518L10	BLACK	2.20	6 MM L10	RRTW518L10	BLACK	4.00
6 MM L12	RR519L12	BLACK	2.60	6 MM L12	RRTW519L12	BLACK	4.80
6 MM L15	RR520L15	BLACK	2.96	6 MM L15	RRTW520L15	BLACK	6.30
10 MM L12	RR521L12	BROWN	3.30	10 MM L12	RRTW521L12	BROWN	11.00
10 MM L15	RR522L15	BROWN	3.60	10 MM L15	RRTW522L15	BROWN	11.80
16 MM L12	RR524L12	WHITE	3.45	16 MM L12	RRTW524L12	WHITE	12.60
16 MM L15	RR525L15	WHITE	4.30	16 MM L15	RRTW525L15	WHITE	12.90
16 MM L18	RR525L18	WHITE	4.40	16 MM L18	RRTW525L18	WHITE	13.10



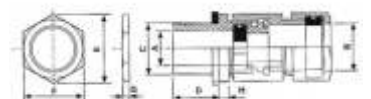
## SINGLE COMPRESSION COMMERCIAL BRASS CABLE GLANDS

Size	Inch	Cat. No.	Rate
12 mm	1/2"	RRSCC12MM	40.00
16 mm	5/8"	RRSCC16MM	43.00
19 mm	3/4"	RRSCC19MM	53.50
22 mm	7/8"	RRSCC22MM	65.00
25 mm	1"	RRSCC25MM	76.00
28 mm	1.1/8"	RRSCC28MM	111.80
32 mm	1.1/4"	RRSCC32MM	138.50
35 mm	1.3/8"	RRSCC35MM	176.00
38 mm	1.1/2"	RRSCC38MM	199.00
45 mm	1.3/4"	RRSCC45MM	230.50
50 mm	2"	RRSCC50MM	316.30
57 mm	2.1/4"	RRSCC57MM	366.00
63 mm	2.1/2"	RRSCC63MM	445.00
70 mm	2.3/4"	RRSCC70MM	575.00
75 mm	3"	RRSCC75MM	720.00



## DOUBLE COMPRESSION COMMERCIAL BRASS CABLE GLANDS

Size	Inch	Cat. No.	Clamping Rane		Rate
			MIN	MAX	
12 mm	1/2"	RRDCC12MM	8.00	12.00	165.00
16 mm	5/8"	RRDCC16MM	11.00	15.00	168.00
19 mm	3/4"	RRDCC19MM	13.00	18.00	194.00
22 mm	7/8"	RRDCC22MM	16.00	21.00	257.00
25 mm	1"	RRDCC25MM	21.00	24.00	330.00
28 mm	1.1/8"	RRDCC28MM	23.00	27.00	405.00
32 mm	1.1/4"	RRDCC32MM	26.00	31.00	608.00
35 mm	1.3/8"	RRDCC35MM	29.00	34.00	730.00
38 mm	1.1/2"	RRDCC38MM	32.00	38.00	817.00
45 mm	1.3/4"	RRDCC45MM	37.00	45.00	1080.00
50 mm	2"	RRDCC50MM	42.00	50.00	1255.00
57 mm	2.1/4"	RRDCC57MM	48.00	56.00	1418.00
63 mm	2.1/2"	RRDCC63MM	55.00	63.00	2020.00
70 mm	2.3/4"	RRDCC70MM	62.00	68.00	2510.00
75 mm	3"	RRDCC75MM	68.00	74.00	2700.00





**ROYAL RAYS**<sup>®</sup>  
Cable Glands and Terminals



ISO 9001:2015

Certificate Number: 305022041305Q

#### Terms & Conditions :

- » Prices (provided by way of a Quotation or a Price List) are subject to change to the prices in effect at the time of delivery. Seller reserves the right to make any corrections to prices quoted due to clerical errors or errors of omission. In the event of any specific requirements (including without limitation any design, specification, ordered quantity, or shipment changes) representing a price increase, Buyer will be notified and afforded an opportunity to confirm.
- » Transportation/Freight/Courier Charges of the consignment from Ex-Works (Vasai E) to the destination will be borne by the purchaser.